

Crimestar®

Law Enforcement Investigation & Records Management System



Easy to Use - Powerful - Flexible - Affordable

The CrimeStar® Advantage

CrimeStar RMS has been designed and built to be a complete, easy to use and flexible information system for law enforcement. Using the best technologies available for the task, we continue to refine the product to meet the changing needs of the justice and public safety community. It is our goal to make CrimeStar the most complete and affordable solution available to the industry. To achieve this objective we have adopted a true product approach to the market. This approach allows us to concentrate our efforts on one product and avoid multiple customized installations that fragment our development efforts and ultimately increase costs.

We listen to our customers and respond to their suggestions for new product features and capabilities. When new CrimeStar features are developed, we automatically provide them to all our supported customers. Using the Internet as our primary distribution method, we frequently release updated and enhanced versions of the program. Our unique combination of product philosophy, customer involvement and current technology allow us to provide a comprehensive, high quality and cost effective solution that all law enforcement agencies can benefit from.

CrimeStar has attracted the interest of federal, state, county, municipal, university and private law enforcement agencies around the world. While we understand that one product can not be all things to all people, we are confident that you will find CrimeStar to be a valuable investigative and records management tool.

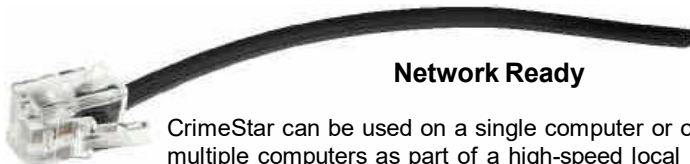
Architecture & Design

Windows Environment

CrimeStar has been designed to operate on modern, low cost, high performance personal computers running the Microsoft Windows 98, Windows NT, 2000 or Windows XP operating system.



Network Ready



CrimeStar can be used on a single computer or on multiple computers as part of a high-speed local area network, wide area network or client server computing environment.

Multiple Document Interface

Taking full advantage of the Windows user interface, CrimeStar allows multiple documents from any module to be open and accessible for entry, editing or viewing at any time. Likewise, system queries and lookups can be performed simultaneous to all data entry as each module's forms are true independent objects that can co-exist within the application. Users can quickly switch between similar or dissimilar forms and documents without the need to close or save information before switching to another document.

Document Reproducibility

CrimeStar maintains information with a historical perspective in mind. While the design makes extensive use of master files and indexes, individual documents are stored in distinct and unique database records so that subsequent updates to the common master files do not corrupt the integrity of historical or dated documents.

Graphical User Interface

The Windows Graphical User Interface (GUI) provides standard dialogs and metaphors which are already widely recognized and familiar to many computer users. Additionally, these constructs are generally easy for non-computer users to grasp and comprehend. Anyone familiar with the "point and click" Windows user interface should find CrimeStar to be intuitive and easy to use.

Modular Approach

CrimeStar has been designed to store information in a series of modules that are patterned after the traditional paper documents used by most law enforcement agencies. While these modules are all unique, they are linked to common master indexes and share similar form designs in order to maintain a consistent and familiar look and feel.

Multiple-Jurisdictions & Field Reporting

CrimeStar has been designed to allow multiple databases to be seamlessly synchronized. This feature allows you to share information between multiple offices or agencies using CrimeStar RMS while maintaining control of your own system. Additionally, this feature allows agencies to use laptops or other field computers to easily transfer data to and from the office computer system without the need for special communications devices or commercial data services that charge expensive monthly service fees.



Easy to Understand

Simple and intuitive user menus work in conjunction with graphically oriented toolbars to make accessing any system module or component fast and easy. Menu items can be accessed with either the mouse or keyboard, using accelerator keys.



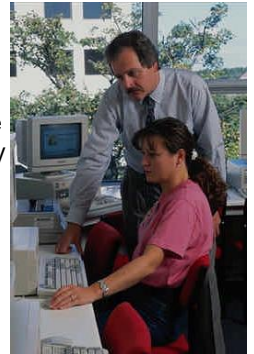
Query Toolbar provides instant access to system information

Add / Edit Toolbar provides a quick and convenient way to create new records or edit existing ones.



All Toolbars can be turned on or off, docked or moved around the screen as desired.

CrimeStar's intuitive menu makes it easy for users to get started with very little training.

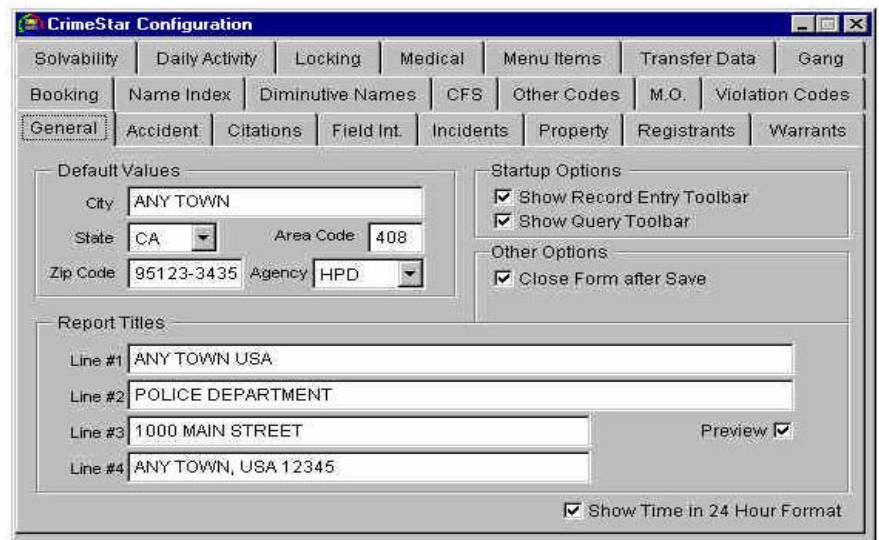


Standard Windows features such as Cut, Copy and Paste and are available throughout the system. CrimeStar also provides a built-in spell check system complete with a 60,000-word, modifiable dictionary.

Configurable Options

Nearly every module in CrimeStar has optional settings and definable code tables that can be configured to make the user interaction more specific and focused to the way your agency does business.

The ability to set default values for data entry forms helps to speed the input process, while customizable report titles make output documents look polished, professional and tailored to your agency.



Module Specific Details

Modules in the CrimeStar system capture common information, such as the dates or locations, using common control layouts so that the representation of that information in each module is consistent. Beyond these common data elements, CrimeStar maintains specific information that is important and unique to each module. Modules are linked to common master indexes; however each module record is preserved in its original form, regardless of dynamically changing master index records.

Specific data fields can be configured as "required".

Required fields are labeled in **RED** to create a visual reminder that this information may not be omitted.



CrimeStar has a complete segment and address specific geofile to validate addresses and common place names at the click of a button.

General and context sensitive help is provided throughout the system



Module printouts show the information in a detailed form, suitable for release as an official department document.

System Modules

- Accidents - Traffic
- Animal Control
- Arrest & Booking
- Be On Lookout (B.O.L.)
- Calls For Service / Field Events
- Citations (w/ Racial Profiling)
- Civil Processing
- Community Policing
- Field Interviews
- Firearm Registration
- Incident - Crime Reports
- Jail / Custody Management
- Pawn File
- Property & Evidence (w/ Photos)
- Registrants
- Warrants

CrimeStar includes a complete suite of modules and features to handle virtually every aspect of information processed by a law enforcement agency.



Advanced OLE Technology links CrimeStar RMS to powerful diagramming tools.



Photos are automatically resized for optimum display and printing. They can also be extracted to separate graphics file and printed individually.

Drag & Drop existing master name photos or import them from disk, digital camera, TWAIN compliant video camera or digital scanner for fast and easy line-ups.



Other Files & Features

- Geographic Reference File (Streets / Segments / Premise)
- Mapping
- Daily Activity Logs
- Personnel & Training
- Alarms File
- Investigative Alerts
- Case Management
- ✗ Approval & Kickback Msg's
- ✗ Assignment Tracking & Aging
- Photo Line-up - Photo Search
- Accident & Crime Scene Diagrams
- Record Level Security
- ✗ Edit & Delete Restrictions

Master Files & Indexes

- Master Name Index
 - ✗ Address History
 - ✗ Alias Names & DOB
 - ✗ Known Associates
 - ✗ Known Offender Attributes
 - ✗ Gang Qualifications
 - ✗ Digital Photos
 - ✗ NCIC Fingerprint ID
 - ✗ Print Detail Page w/Photo
 - ✗ Name Involvements
- Master Vehicle Index
 - ✗ Owner Information
 - ✗ Vehicle Involvements
- Master Address Index
 - ✗ Address Involvements

Master Name records provide detailed information on a subject including a historical address summary, alias names, known associates, multiple digital photos and a comprehensive summary of all law enforcement contacts and criminal involvements.

CrimeStar provides the ability to track relationships between people, vehicles and locations through common documents and associations. The ability to move laterally between records, as well as drill down into more specific detail, makes CrimeStar the most flexible investigative tool imaginable.

Complete Search Capability

Master Name Index Inquiry

Name / Desc. Known Offender FingerPrint

Name: SMITH

D.O.B.: SCHMIDT

Local #: SCHMIDT

Range: SCHMIDT

Address: SCHMIDT

City: SCHMIDT

Sex: SCHWIND

Race: SMITH

Scars/Ma: SMITH

Master Name Query Result

Master Name - SMITH, ADAM

Name: SMITH ADAM WILLIAM

D.O.B.: 11/10/1960 DL#: 17881223 NV SSN: 555-12-4321

Local #: SID #: FBI #:

Sex: M Height: 6-00 Hair Color: BRO

Race: W Weight: 185 Eye Color: BRO

Scars: Eagle on Left Shoulder

Marks:

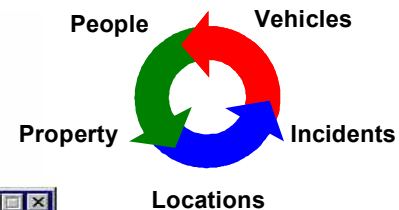
Tattoos:

FingerPrint Classification (NCIC Standard)

Right: 17 TT 20 24 19 Left: 18 20 23 19 21

AFIS ID #: SAW12422

Quick Summary Lists make selecting multiple records easy!



You can configure, and automatically cross reference diminutive first names. Example: Search for a subject named 'Robert' and CrimeStar will find both 'Robert' and 'Bob'.

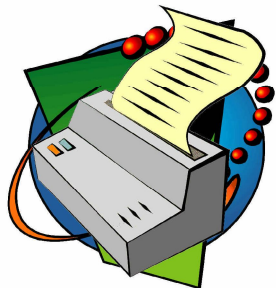
"Automatic Checks"

Automatic BOL, warrant, registrant investigative alert and officer safety caution checks are performed on Master Name searches.

Automatic cross check of serial numbers between the pawn module and the property module.

Comprehensive Reports

CrimeStar provides a complete set of pre-defined system reports. Reports are selected from a simple menu list that provides a detailed explanation of each report.



Reports can either be sent directly to the printer or shown on the screen in preview mode, then optionally sent to the printer on demand.

CrimeStar Reports

Arrest & Bkg totals by level

BOL records

Bicycle Registrations by Date

CFS Audit Report

CFS Briefing Log

CFS Briefing Log /by Primary Unit

CFS Briefing Log by Date/Location

CFS Briefing Log w/o Dispo comment

CFS By Call & Time of Day / Day of Week

CFS By Time of Day / Day of Week

CFS Consumed Time By Call Type

CFS Daily Log - Ascending Order

CFS Daily Log - Descending Order

CFS Grouped By Area

Report ID Code: 110 Defined Reports

CFS-007

☐ Report Preview

Run Report Cancel

This report totals all calls for service within a given date range and for a specific call type in a matrix format where day of week is the 'X' Axis and time of day is the 'Y' axis.

AUDIT REPORTS

CrimeStar provides a series of module audit reports that sequentially list the records and documents contained within each respective module.

SUMMARY & GRAPH REPORTS

CrimeStar provides information summary reports that group, total, count and graph various common data elements and information to provide an overall easy to understand view of activity. CrimeStar also produces all required FBI UCR Reports and "Clery" reports.

PRODUCTIVITY REPORTS

CrimeStar provides productivity reports that list, total and summarize information related to either all officers or a specific single officer, to help show an individual's productivity level as it relates to Calls For Service, Citations, Field Interviews, Incident Reports, etc.

MATRIX ANALYSIS REPORTS

CrimeStar provides analytical reports that divide information into a matrix cross tabulation format that totals various activities by time of day and day of week.

WORD AUTOMATION REPORTS

Define specific reports using Microsoft Word templates and CrimeStar can populate your template with data

BUILD YOUR OWN CUSTOM REPORTS

CrimeStar also provides you with a powerful ad-hoc query and reporting tool that lets you define what to search for, what data fields to report, how to sort the results, and how to display the output. You can even direct the results of your own custom query to any one of many different file formats so the data from your report can be used with other popular software programs, such as word processors, spreadsheets and other desktop software. These user created reports can then be saved for future use or modification. In addition to this great tool all CrimeStar RMS data can be accessed via ODBC allowing you to use other 3rd party database reporting programs.

Download a **FREE** evaluation at <http://www.crimestar.com>

Big System Features

Feature-for-feature, CrimeStar RMS compares favorably as one of the best systems available in the market today. Many records management systems simply don't offer the kind of advanced features and ease of use that CrimeStar RMS provides. The systems that do offer these powerful capabilities are too often targeted at only the largest of organizations, as they tend to be very expensive and beyond the financial reach of most law enforcement agencies.

Crimestar corporation believes that the efficiency and effectiveness of sophisticated software technology should not be limited to a select few. All law enforcement and public safety agencies, no matter how large or small can benefit greatly from the advanced capabilities of a comprehensive and very complete records management system.



Affordable To Buy & Affordable To Own

While other companies may offer products at a low initial price, they usually charge you more to get the modules and features you really need or want. CrimeStar RMS includes all system modules and features for one low license price. CrimeStar's popular concurrent user licensing approach helps to minimize costs and provides our customers with great flexibility. Additionally, Crimestar charges a very low annual support fee, making CrimeStar RMS affordable to own as it is to buy. The combination of our incredibly low license prices, our flexible licensing approach and low annual support fee, makes CrimeStar RMS the most cost effective law enforcement records management system on the market today!

***"You can spend more money,
but you can't buy a better records management system"***

CrimeStar® RMS System Requirements

Operating System: Windows 2000, XP, 7, 8, 10
Processor: Intel or Compatible Pentium
1 Ghz or Faster
RAM: 1 GB - More Recommended
Disk Space: 5 GB - More Recommended
Video: XGA 1024x768 or Higher

For more information contact:

Crimestar Corporation

Post Office Box 6100

Santa Barbara, California 93160

Public Safety Solutions and Service Since 1989

Visit us on the world wide web:

<http://www.crimestar.com>